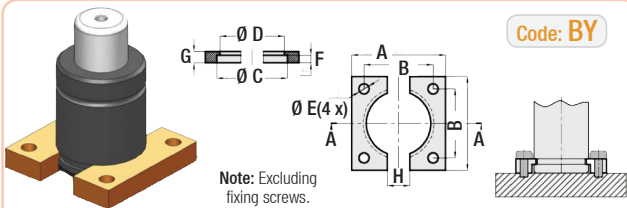
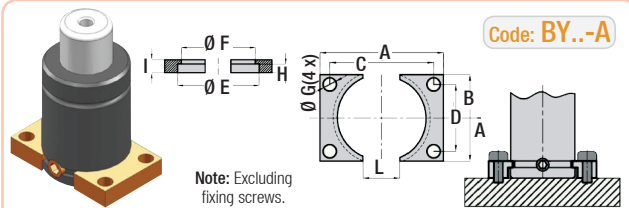


Gas Spring Fixing Elements, Mounting



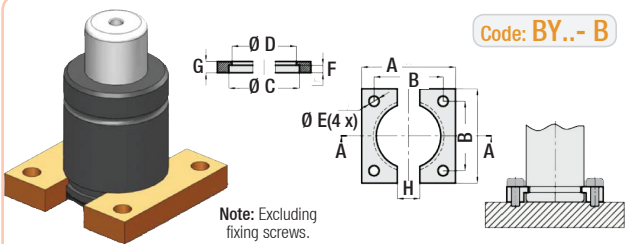
Code: **BY**

Order	Cylinder Ø	A	B	C	D	E	F	G	H
BY.32	Ø 32	50	35	32.5	28.5	6.6	4	7	5
BY.38	Ø 38	55	40	38.5	34.5	7	4	7	5
BY.45	Ø 45	70	50	45.5	41.5	9	4	7	20
BY.50	Ø 50	75	56.5	50.5	44.5	9	8	12	24
BY.63	Ø 63	85	63.5	63.5	57.5	11	8	12	24
BY.75	Ø 75	100	73.5	75.5	68.5	11	8	12	24
BY.95	Ø 95	120	92	95.5	88.5	13.5	8	12	24
BY.120	Ø 120	140	109.5	120.5	113.5	13.5	8	12	24
BY.150	Ø 150	190	138	150.5	143.5	17.5	8	12	24
BY.195	Ø 195	210	170	195.5	188	17.5	8	13	24



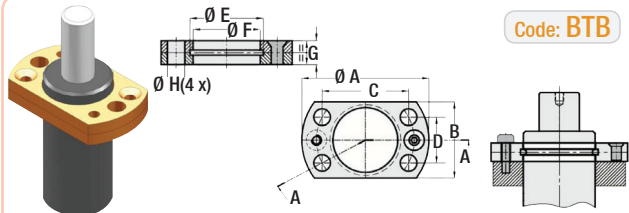
Code: **BY...-A**

Order	Cylinder	A	B	C	D	E	F	G	H	I	L
BY.32-A	Ø 32	50	27	40	18	32.5	28.5	6.6	4	7	20
BY.38-A	Ø 38	55	33	44	20	38.5	34.5	6.6	4	7	20
BY.45-A	Ø 45	70	40	57	27	45.5	41.5	9	4	7	25
BY.50-A	Ø 50	75	45	62	32	50.5	44.5	9	8	12	25
BY.63-A	Ø 63	85	58	69	42	63.5	57.5	11	8	12	30
BY.75-A	Ø 75	100	70	84	54	75.5	68.5	11	8	12	30
BY.95-A	Ø 95	120	90	100	70	95.5	88.5	13.5	8	12	40
BY.120-A	Ø 120	140	115	120	95	120.5	113.5	13.5	8	12	50
BY.150-A	Ø 150	190	145	165	120	150.5	143.5	17.5	8	12	60
BY.195-A	Ø 195	210	190	185	165	195.5	188	17.5	8	12	80



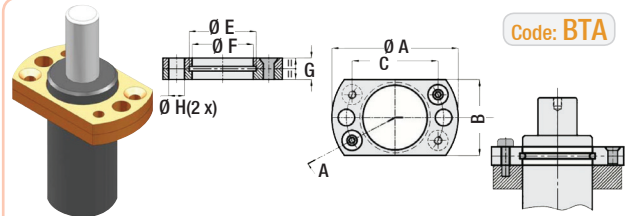
Code: **BY...-B**

Order	Cylinder	A	B	C	D	E	F	G	H
BY.32-B	32	50	35	32.5	28.5	6.6	4	7	12
BY.38-B	38	55	40	38.5	34.5	6.6	4	7	12
BY.63-B	63	100	73.5	64	57.5	11	8	12	24



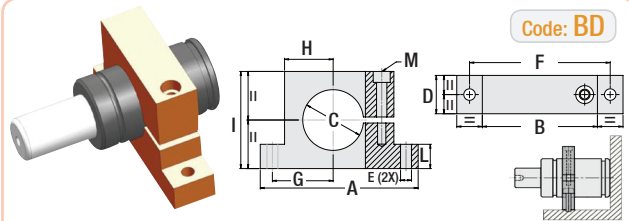
Code: **BTB**

Order	Cylinder Ø	A	B	C	D	E	F	G	H
BTB.19	Ø 19	44	25	30	12	21	19.5	9	6.6
BTB.25	Ø 25	50	30	34	18	27	25.5	9	6.6



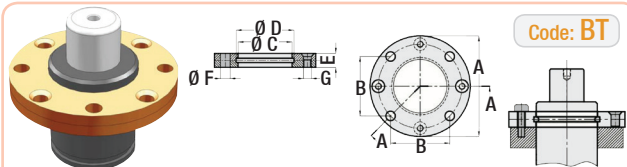
Code: **BTA**

Order	Cylinder Ø	A	B	C	E	F	G	H
BTA.19	Ø 19	45	25	32	21	19.5	9	6.6
BTA.25	Ø 25	50	30	38	27	25.5	9	6.6



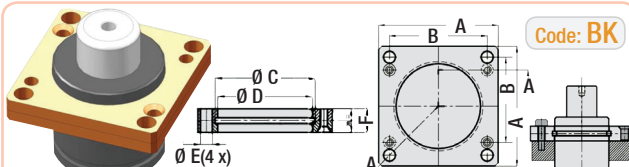
Code: **BD**

Order	Cylinder Ø	A	B	C	D	E	F	G	H	I	L	M
BD.32	32	90	54	32	20	9	72	31	22	45	15	M8
BD.38	38	95	59	38	20	9	77	34	25	55	15	M8
BD.45	45	100	64	45	20	9	82	37	28	60	15	M8
BD.50	50	130	90	50	30	9	110	50	40	80	20	M8
BD.75	75	160	115	75	30	11	137	63.5	52.5	105	20	M10
BD.95	95	195	145	95	30	13.5	170	80	67.5	125	20	M12
BD.120	120	220	165	120	30	13.5	195	92.5	77.5	148	20	M12
BD.150	150	260	200	150	30	13.5	230	110	95	200	20	M12



Code: **BT**

Order	Cylinder Ø	A	B	C	D	E	F
BT.32	32	60	35	32.5	34	9	7
BT.38	38	68	40	38.5	40	9	7
BT.45	45	86	50	45.5	47	13	9
BT.50	50	95	56.5	50.5	54	13	9
BT.63	63	122	73.5	63.5	67	16	11
BT.75	75	122	73.5	75.5	80	16	11
BT.95	95	150	92	95.5	100	18	13.5
BT.120	120	175	109.5	120.5	125	21	13.5
BT.150	150	220	138	150.5	155	27	17.5
BT.195	195	290	170	195.5	200	27	17.5



Code: **BK**

Order	Cylinder Ø	A	B	C	D	E	F
BK.32	32	45	35	34	32.5	7	9
BK.38	38	52	40	40	38.5	7	9
BK.45	45	64	50	47	45.5	9	13
BK.50	50	70	56.5	54	50.5	9	13
BK.63	63	90	73.5	67	63.5	11	16
BK.75	75	90	73.5	80	75.5	11	16
BK.95	95	110	92	100	95.5	13.5	18
BK.120	120	130	109.5	125	120.5	13.5	21
BK.150	150	162	138	155	150.5	17.5	27
BK.195	195	210	170	200	195.5	17.5	27
BK.63-1	63	80	64	67	63.5	11	16